

Making Linux, UNIX, and Mac Systems First-Class Citizens in a Windows Environment™

# Likewise® Enterprise

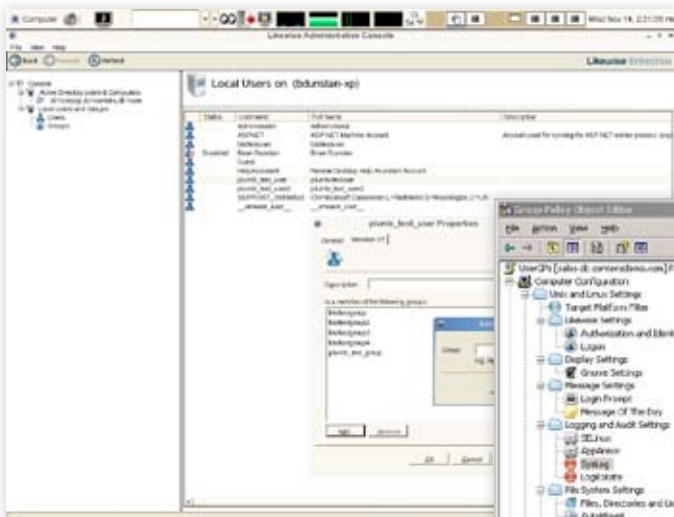
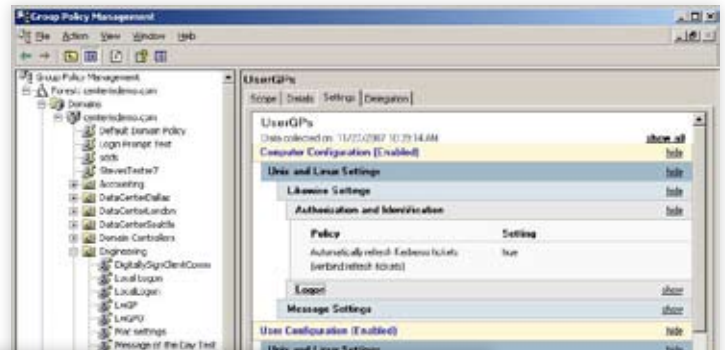
### BENEFITS

- Improve network security
- Demonstrate regulatory compliance with robust auditing and reporting tools
- Increase operational efficiency
- Centrally manage UNIX, Linux, and Mac computers
- Implement single sign-on
- Apply thousands of group policies
- Support for more than 118+ platforms
- Apply Gnome configurations to Linux users and desktops with group policies
- One user, one ID
- Consolidate directory services

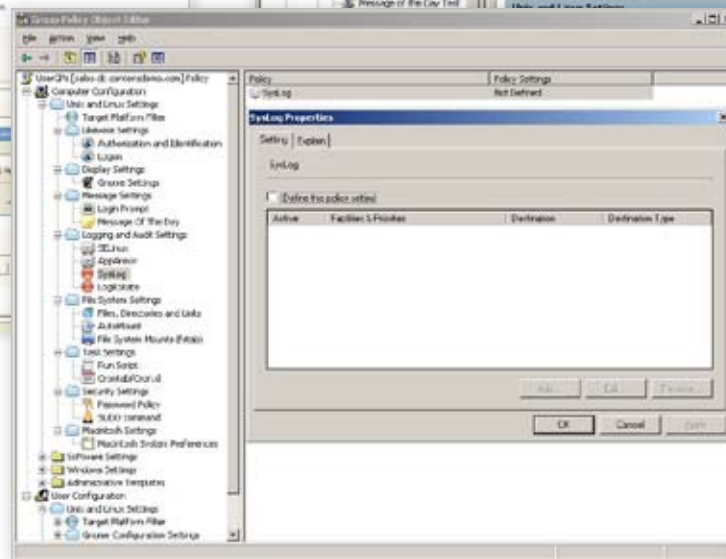
## Identity Management for Mixed Networks

Likewise Enterprise seamlessly joins Linux®, UNIX®, and Mac® systems to Microsoft® Active Directory™ to manage all your users and computers in one place, authenticate users in the same way on all your platforms, control access to sensitive resources, apply group policies, audit your network, and view custom reports.

**Group Policy Management Console:** Shows settings, scope, and other information for Likewise group policies.



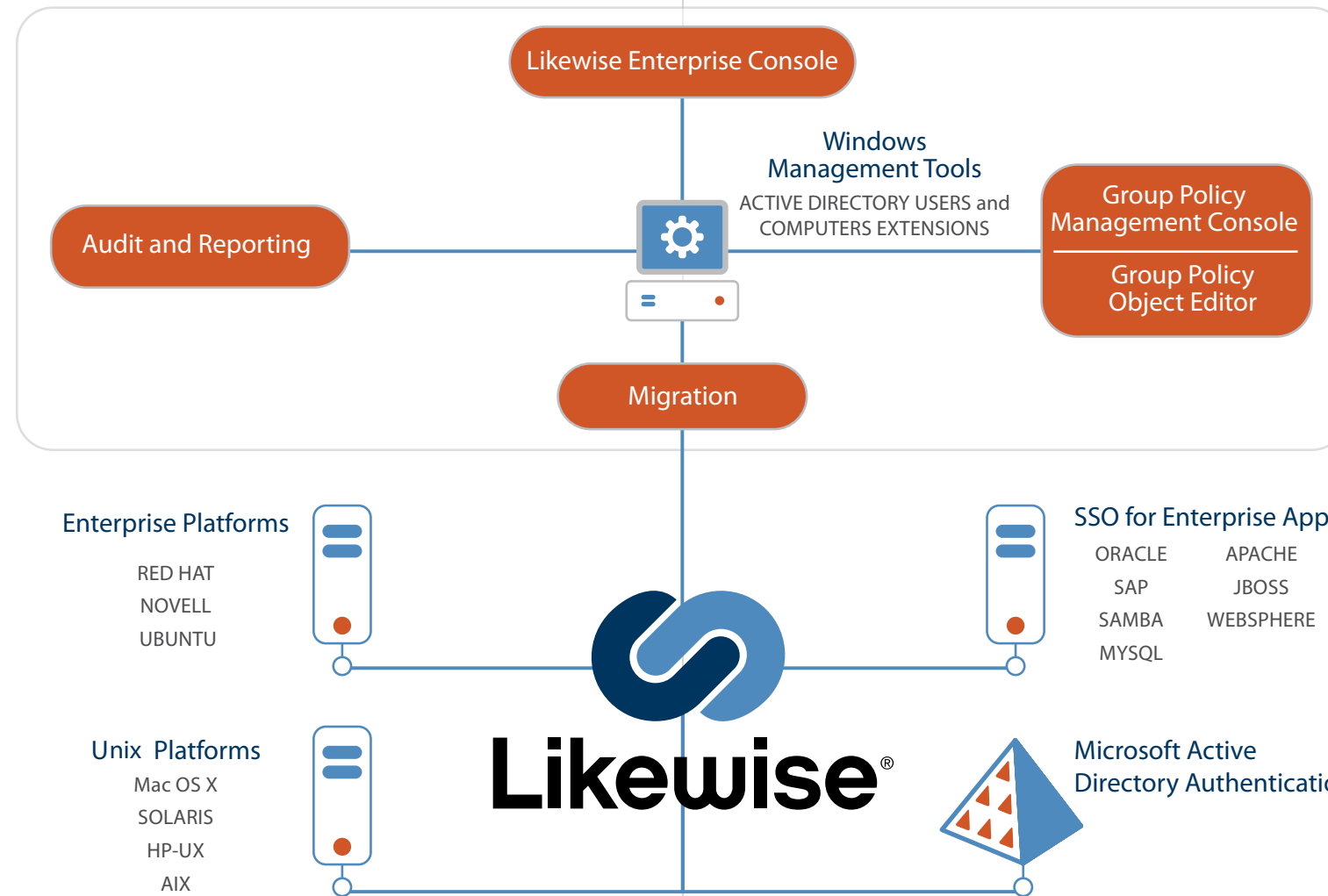
**NEW!**  
Likewise Administrative Console: Manage access to users, computers, groups, and organizational units in Active Directory from a Linux or Mac desktop.



**Group Policy Object Editor:** Likewise group policies are integrated into the Microsoft Group Policy Object Editor.

### How It Works

- 1 The **Likewise Enterprise Agent** is installed on Linux, Unix and Mac computers with BitRock installers.
- 2 These machines are then joined to Active Directory by using the command line, a graphical tool, or deployment scripts.
- 3 The **Likewise Enterprise Management Tools** are used to configure Active Directory to store Linux, Unix, and Mac information for users and computers.
- 4 Existing Active Directory management tools are then used to manage non-Windows systems. The Group Policy Object Editor is used to configure group policies for Linux, Unix, and Mac.
- 5 The **Likewise Administrative Console** is used to manage Active Directory directly from a Linux or Mac machine.
- 6 The **Likewise Migration Tool** is used to import Linux, Unix, and Mac OS X passwd and group files -- typically /etc/passwd and /etc/group -- and automatically map their UIDs and GIDs to users and groups defined in Active Directory.
- 7 The **Likewise Auditing and Reporting Tools** are used to create custom reports about Linux and Unix users, groups, computers, forests, and domains within Active Directory. It is also used to monitor and audit security-related events such as denied sudo commands and failed logon attempts.



### Broadest Platform Support in the Industry



### Likewise Enterprise Features

#### Authentication Engine for Linux, Unix and Mac

- Join non-Windows servers to Microsoft Active Directory with the command line or an optional graphical user interface
- Authenticate users with Likewise Identity Services – next generation authentication engine for Linux, Unix and Mac
- Centralized administration that includes user provisioning and deprovisioning for Linux, Unix and Mac OS X
- Provides a single user name and password for Windows and non-Windows systems
- Only solution with a flexible deployment model that allows you to extend the AD schema or not—but maintain full product functionality either way
- Organizational unit-level deployment requires no enterprise domain administrative privileges
- A command-line interface for joining domains that provides detailed error messages and gives you control over changes to the local system
- Streamlines your ability to allow users and groups to access resources by sharing attributes across organizational units (OUs)
- Support for multiple forests with one-way and two-way cross forest trusts
- Credential caching in the event of temporary loss of connectivity with the Active Directory Domain Controller
- Manage users and computers in Active Directory from a Linux machine through the Likewise Administrative Console- a plug-gable framework that provides MMC- like functionality and runs on any Linux platform and Mac OS X

#### Group Policy-Based Management

- Leader in Group Policy support with thousands of Active Directory group policies for managing Linux, Unix and Mac users, servers and desktops – including policies for security, authentication and identification, logon, display, message, logging and auditing, file system, and tasks such as cron jobs
- Full integration with the Group Policy Management Console and the Group Policy Object Editor
- Apply Gnome configuration policies to Linux desktops and users
- Converts Mac OS X Managed Client settings (MCX) from Workgroup Manager into Group Policy Objects that can be centrally applied to Mac computers through Active Directory
- The only solution that allows you to filter group policies to apply them to specific platforms
- Lock down Linux desktops with Gnome group policies for user and computer configuration settings

#### Directory Migration

- Import Linux, Unix, and Mac OS X passwd and group files – typically /etc/passwd and /etc/group – and automatically map UIDs and GIDs to users and groups defined in Active Directory
- Likewise Cell Technology allows custom mapping of an AD-user to a set of Unix attributes and can provide users with different primary and second group memberships on different machines
- Scripting layer and migration tools allow access to data in a transparent fashion regardless of your deployment method
- Resolve conflicts and ambiguous user names before you commit the changes
- Generate a Windows automation script to associate the Linux and Unix UIDs and GIDs with Active Directory users and groups

#### Reporting and Audit

- Pre-defined reports make it easy to view access privilege for all users, groups, containers, and systems managed with Likewise Enterprise
- Permits customization of output, including scoping, filtration, column selection, and data limits
- Directly output data to screen, print, or save to a variety of formats
- Easily generate a report that displays what settings within group policies are enabled for Linux, Unix, and Mac OS X systems through the Group Policy Management Console

#### Single Sign On for Enterprise Applications

- Enables single sign-on for any enterprise application that supports Kerberos and LDAP, including Samba, Apache, SSH, NFS, WebSphere, JBoss, Tomcat, SAP, Oracle, and MySQL
- Built-In support for Apache, SSH, and Samba

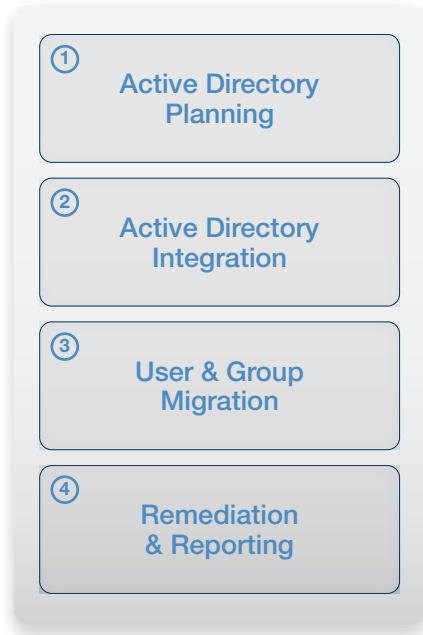
## The Likewise Software Enterprise Delivery Model

Reducing the Cost of Migration and Deployment

We understand that the cost of the software is only one part of the total cost equation. Deploying software into large enterprise networks can often be burdensome and cost prohibitive. The Likewise Software Enterprise Delivery Model minimizes the impact of network changes, reduces deployment time and costs, and improves your overall TCO.

Through a standard process that has been established by deploying in many Fortune 1000 networks, the Likewise Software support team will guide you through 4 phases: Active Directory Planning, Active Directory Integration, User & Group Migration, and Remediation & Reporting.

You will benefit from the deep expertise of the Likewise team, best practices, integration guides, upgrades, and scripts for deployment.



In addition, we partner with premier system integrators such as IBM Global Services, Avanade, and others that are committed to helping you meet your unique business and technology requirements.

## Support Options

### 24 x 7

- 24x7x365 access for production emergencies
- Support team member dedicated to your account
- Live first response within **1** hour during business hours
- Online access to documentation
- Online access to the knowledge base
- Product updates and upgrades

### 12 x 5

- 12x5 live priority support
- Live first response within **4** hours during business hours
- Online access to documentation
- Online access to the knowledge base
- Product updates and upgrades

### PRE-SALES

- 30 days of free online support
- Support team on call for installation issues
- Assistance from our professional services staff for proof of concepts

## Strategic Partners



15395 SE 30th Pl. Suite 140  
Bellevue, WA 98007  
T: 425.378.7887  
F: 425.484.8200

[www.likewise.com](http://www.likewise.com)  
[sales@likewise.com](mailto:sales@likewise.com)

The computer operating system names listed herein may be the registered or unregistered trademarks of third-party companies. These trademarks are included for informational purposes only and are not intended to imply or suggest any third-party affiliation.